

\$245,900 - Sw-21-70-6-6, Rural Grande Prairie No. 1, County of

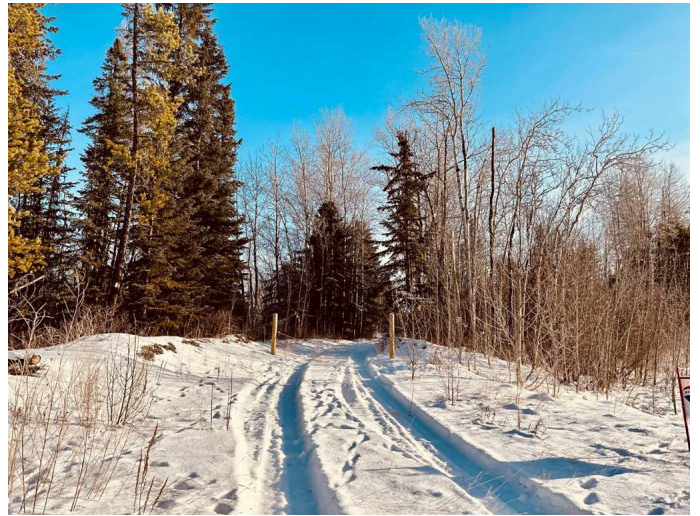
MLS® #A1125182

\$245,900

0 Bedroom, 0.00 Bathroom,
Land on 2.82 Acres

Dunes West, Rural Grande Prairie No. 1,
County of, Alberta

Build your dream home on this serene fully treed 2.82 acre pie shaped lot with building site cleared and walk-out potential - just 1 min off pavement and just 10 min from GP City limits! This gorgeous lot includes a great build site, cleared and ready for shop with perfect turnaround driveway, and home site with walk-out grade plus potential for secondary access from the South/East Side of the lot. West road access/driveway has 2" of fill. This is one of the higher lots in the area, with a closed County Rd to the North, a bird sanctuary to the South, and a private acreage across -offering perfect privacy no matter where you decide to locate your dream home! Aquatera initial tie-in fee is already paid, and additional services are to the property line! This lot offers tons of building potential, take a drive and walk-thru today. Follow the signs and view this one of a kind piece of paradise just min from City amenities. Close to Nordic Ski trails, Nighthawk Ski area, ATV & biking trails galore and the Wapiti River. Zoned CR-5 and no GST on purchase price!



Essential Information

MLS® #	A1125182
Price	\$245,900
Bathrooms	0.00

Acres	2.82
Type	Land
Sub-Type	Residential Land
Status	Active

Community Information

Address	Sw-21-70-6-6
Subdivision	Dunes West
City	Rural Grande Prairie No. 1, County of
County	Grande Prairie No. 1, County of
Province	Alberta
Postal Code	T8W 5K1

Amenities

Utilities	Water Available, Water At Lot Line, Water Paid For
-----------	--

Exterior

Lot Description	Cleared, Corner Lot, Corners Marked, Environmental Reserve, Irregular Lot, Many Trees, No Neighbours Behind, Private, See Remarks, Treed
-----------------	--

Additional Information

Date Listed	June 29th, 2021
Days on Market	1367
Zoning	CR-5

Listing Details

Listing Office	RE/MAX Grande Prairie
----------------	-----------------------

Data is supplied by Pillar 9â„¢ MLSÂ® System. Pillar 9â„¢ is the owner of the copyright in its MLSÂ® System. Data is deemed reliable but is not guaranteed accurate by Pillar 9â„¢. The trademarks MLSÂ®, Multiple Listing ServiceÂ® and the associated logos are owned by The Canadian Real Estate Association (CREA) and identify the quality of services provided by real estate professionals who are members of CREA. Used under license.