

# \$299,999 - 101, 67325 Churchill Park Road, Lac La Biche County

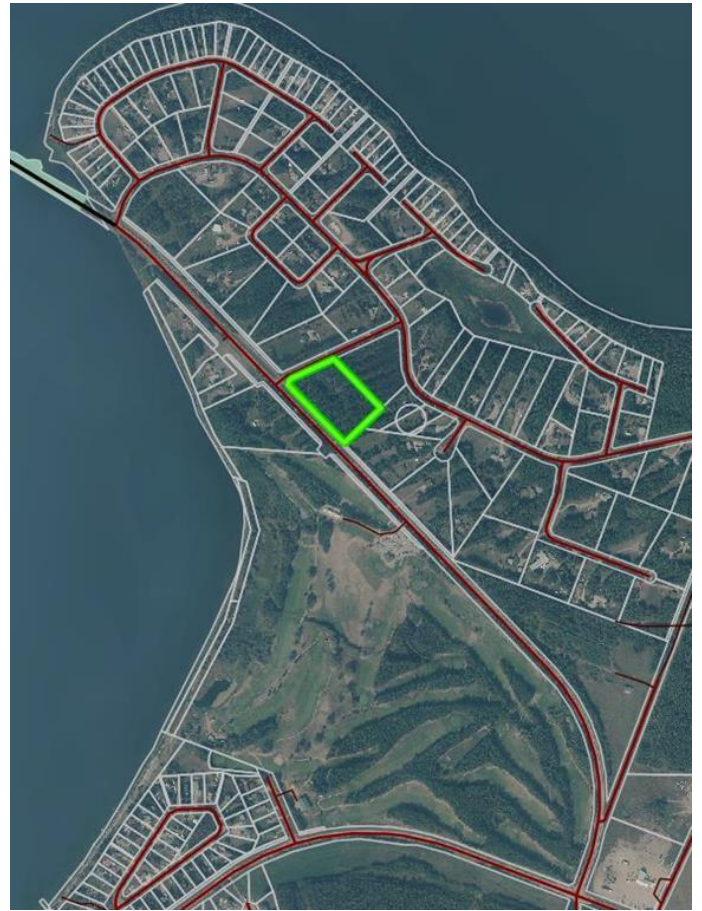
MLS® #A2075471

**\$299,999**

0 Bedroom, 0.00 Bathroom,  
Land on 5.54 Acres

NONE, Lac La Biche County, Alberta

Lakeview Estates 5.54 acre fully serviced lot. This is a rare property being one of the largest serviced properties in Lakeview estates. Across from the Lac La Biche Golf Club . 5 minutes from lac La Biche schools and shopping and one minute from the Lake. Walking trails and boat launch close by as well as back country lake, quadding and hunting grounds minutes from your front door. Sale price is subject to GST .



## Essential Information

MLS® #	A2075471
Price	\$299,999
Bathrooms	0.00
Acres	5.54
Type	Land
Sub-Type	Residential Land
Status	Active

## Community Information

Address	101, 67325 Churchill Park Road
Subdivision	NONE
City	Lac La Biche County
County	Lac La Biche County
Province	Alberta
Postal Code	T0A 2C1

## Additional Information

Date Listed August 22nd, 2023  
Days on Market 589  
Zoning Country Residential

**Listing Details**

Listing Office RE/MAX LA BICHE REALTY



Data is supplied by Pillar 9â„¸ MLSÂ® System. Pillar 9â„¸ is the owner of the copyright in its MLSÂ® System. Data is deemed reliable but is not guaranteed accurate by Pillar 9â„¸. The trademarks MLSÂ®, Multiple Listing ServiceÂ® and the associated logos are owned by The Canadian Real Estate Association (CREA) and identify the quality of services provided by real estate professionals who are members of CREA. Used under license.

