

\$999,900 - 5296 Blindman Drive, Rural Red Deer County

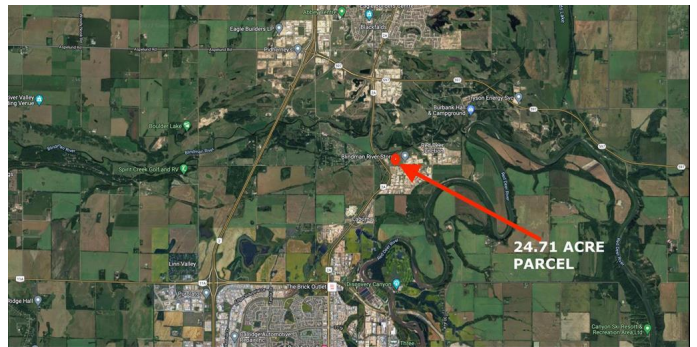
MLS® #A2110694

\$999,900

0 Bedroom, 0.00 Bathroom,
Land on 24.71 Acres

Blindman Industrial Park, Rural Red Deer
County, Alberta

24.71 ACRES of farmland (currently zoned farmland, is part of the Blindman Area Structure Plan) and, all on one title available in Blindman Industrial Park! Currently native grass with one active oil lease site (Oil revenue revenue of approximately \$2,500/year-NAL Resources) An ideal spot to open an RV Storage/ Mini Storage. Lot survey's available to view, as approximately 10-12 acres of land is usable for building sites (pipeline right of ways) . Current taxes of \$70.31/year makes this property. Many industrial zoning options are available for your growing business, several access approaches all ready built, for east access and south access along Blindman Drive. Rail line bordering the parcel of line adjacent to the west and curving north. Tremendous opportunity in blindman industrial Park.



Essential Information

| | |
|-----------|-----------------|
| MLS® # | A2110694 |
| Price | \$999,900 |
| Bathrooms | 0.00 |
| Acres | 24.71 |
| Type | Land |
| Sub-Type | Industrial Land |
| Status | Active |

Community Information

| | |
|-------------|--------------------------|
| Address | 5296 Blindman Drive |
| Subdivision | Blindman Industrial Park |
| City | Rural Red Deer County |
| County | Red Deer County |
| Province | Alberta |
| Postal Code | T4S2M4 |

Additional Information

| | |
|----------------|---------------------|
| Date Listed | February 28th, 2024 |
| Days on Market | 400 |
| Zoning | Agriculture |

Listing Details

| | |
|----------------|----------------------|
| Listing Office | Century 21 Advantage |
|----------------|----------------------|

Data is supplied by Pillar 9â„¸ MLSÂ® System. Pillar 9â„¸ is the owner of the copyright in its MLSÂ® System. Data is deemed reliable but is not guaranteed accurate by Pillar 9â„¸. The trademarks MLSÂ®, Multiple Listing ServiceÂ® and the associated logos are owned by The Canadian Real Estate Association (CREA) and identify the quality of services provided by real estate professionals who are members of CREA. Used under license.