

\$180,000 - 138, 13379 670 Twp Rd Township, Beaver Lake

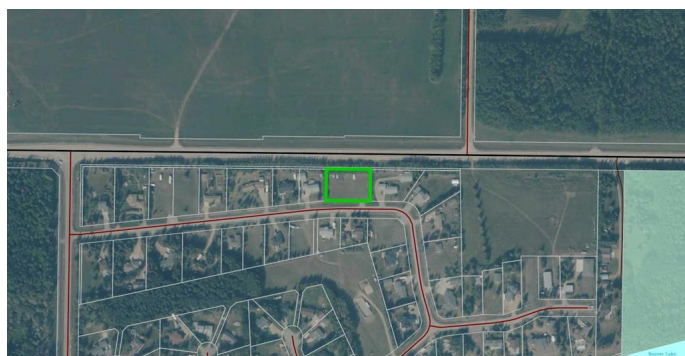
MLS® #A2122512

\$180,000

0 Bedroom, 0.00 Bathroom,
Land on 0.74 Acres

Beaver Lake, Beaver Lake, Alberta

Fully serviced residential lot at popular Holowachuk Estates of Beaver Lake Hamlet. Town water and sewer as well as power and gas. Plenty of room for your dream home and a dream garage/shop for your toys and vehicles. Minutes from town, new boat launch, walking and bike paths to town. Beaver lake is known for its clean water , and popular for kayakers, paddle boarders, motor sports, sportfishing and pontooing amongst its secluded bays and islands..



Essential Information

| | |
|-----------|------------------|
| MLS® # | A2122512 |
| Price | \$180,000 |
| Bathrooms | 0.00 |
| Acres | 0.74 |
| Type | Land |
| Sub-Type | Residential Land |
| Status | Active |

Community Information

| | |
|-------------|--------------------------------|
| Address | 138, 13379 670 Twp Rd Township |
| Subdivision | Beaver Lake |
| City | Beaver Lake |
| County | Lac La Biche County |
| Province | Alberta |
| Postal Code | T0A 2C2 |

Additional Information

| | |
|----------------|---------------------------|
| Date Listed | April 11th, 2024 |
| Days on Market | 336 |
| Zoning | Low Density Hamlet Reside |

Listing Details

| | |
|----------------|------------------------|
| Listing Office | RE/MAX LA BICHE REALTY |
|----------------|------------------------|

Data is supplied by Pillar 9â,,ç MLSÂ® System. Pillar 9â,,ç is the owner of the copyright in its MLSÂ® System. Data is deemed reliable but is not guaranteed accurate by Pillar 9â,,ç. The trademarks MLSÂ®, Multiple Listing ServiceÂ® and the associated logos are owned by The Canadian Real Estate Association (CREA) and identify the quality of services provided by real estate professionals who are members of CREA. Used under license.