

# \$139,900 - #304, 2814 48 Avenue, Athabasca

MLS® #A2127505

**\$139,900**

2 Bedroom, 1.00 Bathroom, 792 sqft  
Residential on 0.00 Acres

Athabasca Town, Athabasca, Alberta

Affordable 2 bedroom condo on the top floor of this well kept apartment style condominium. This condo features 2 bedrooms and a 4 piece bathroom. Gas fireplace in the quaint living room and a great layout for entertaining your friends. In-suite laundry and your own private balcony. This is a great investment if you are looking for a low maintenance lifestyle.

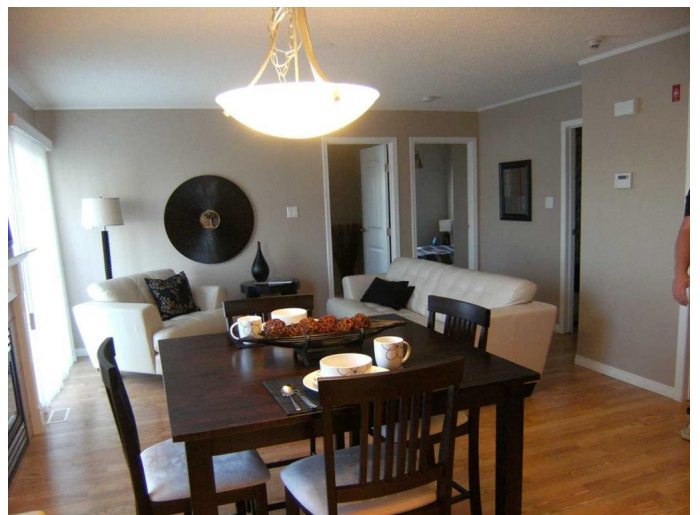
Built in 2008

## Essential Information

MLS® #	A2127505
Price	\$139,900
Bedrooms	2
Bathrooms	1.00
Full Baths	1
Square Footage	792
Acres	0.00
Year Built	2008
Type	Residential
Sub-Type	Apartment
Style	Low-Rise(1-4)
Status	Active

## Community Information

Address	#304, 2814 48 Avenue
Subdivision	Athabasca Town
City	Athabasca
County	Athabasca County



Province Alberta  
Postal Code T9S 1B7

### Amenities

Amenities Parking  
Utilities Electricity Connected, Natural Gas Connected, Sewer Connected, Water Connected  
Parking Spaces 1  
Parking Off Street, Assigned

### Interior

Interior Features Open Floorplan  
Appliances Dishwasher, Refrigerator, Washer/Dryer, Stove(s)  
Heating Forced Air, Natural Gas  
Cooling None  
Fireplace Yes  
# of Fireplaces 1  
Fireplaces Gas, Living Room  
# of Stories 3

### Exterior

Exterior Features None  
Roof Asphalt Shingle  
Construction Manufactured Floor Joist, Wood Frame, Vinyl Siding

### Additional Information

Date Listed May 16th, 2024  
Days on Market 302  
Zoning R7

### Listing Details

Listing Office ROYAL LEPAGE COUNTY REALTY

Data is supplied by Pillar 9â„¢ MLSÂ® System. Pillar 9â„¢ is the owner of the copyright in its MLSÂ® System. Data is deemed reliable but is not guaranteed accurate by Pillar 9â„¢. The trademarks MLSÂ®, Multiple Listing ServiceÂ® and the associated logos are owned by The Canadian Real Estate Association (CREA) and identify the quality of services provided by real estate professionals who are members of CREA. Used under license.