

\$1,849,000 - 29250 Rr 34, Rural Mountain View County

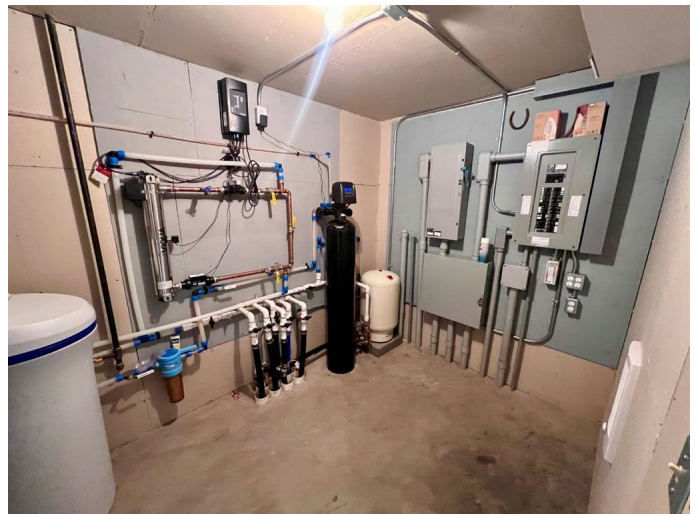
MLS® #A2173408

\$1,849,000

0 Bedroom, 0.00 Bathroom,
Agri-Business on 151.03 Acres

NONE, Rural Mountain View County, Alberta

This 151-acre farm combines 58 acres of crop production and a 35.5 acre, high-yielding Saskatoon Berry orchard, formerly the successful Solstice Berry Farm. It offers passive revenue potential through custom farming, with infrastructure including a processing building, hay barn, grain bins, septic system, and water wells. Located 30 minutes from Cochrane and an hour from Calgary, the farm provides strong business expansion opportunities with established retail connections. Build your dream home to enjoy amazing mountain views, start a family business or just harvest the crop commercially for great revenue. Must see to truly appreciate this property!



Essential Information

MLS® #	A2173408
Price	\$1,849,000
Bathrooms	0.00
Acres	151.03
Type	Agri-Business
Sub-Type	Agriculture
Status	Active

Community Information

Address	29250 Rr 34
Subdivision	NONE
City	Rural Mountain View County

County	Mountain View County
Province	Alberta
Postal Code	T0M 0S0

Additional Information

Date Listed	October 14th, 2024
Days on Market	190
Zoning	AG

Listing Details

Listing Office	Real Estate Centre - Fort Macleod
----------------	-----------------------------------

Data is supplied by Pillar 9â„¢ MLSÂ® System. Pillar 9â„¢ is the owner of the copyright in its MLSÂ® System. Data is deemed reliable but is not guaranteed accurate by Pillar 9â„¢. The trademarks MLSÂ®, Multiple Listing ServiceÂ® and the associated logos are owned by The Canadian Real Estate Association (CREA) and identify the quality of services provided by real estate professionals who are members of CREA. Used under license.