

# \$460,000 - 724 Florence Ho Leong Crescent N, Lethbridge

---

MLS® #A2183451

**\$460,000**

3 Bedroom, 2.00 Bathroom, 924 sqft  
Residential on 0.08 Acres

Legacy Ridge / Hardieville, Lethbridge, Alberta

Welcome to this stunning 4-level split house situated in a desirable neighborhood, conveniently located near schools and parks. As you enter, you are greeted by a welcoming foyer that sets the tone for the rest of the home. On the main level, you will discover a spacious kitchen designed with both style and practicality in mind. The kitchen features a generous long island, perfect for family meals, casual dining, and gatherings with friends. The island provides more counter space for food preparation and is an ideal spot for loved ones to congregate while you cook. Adjacent to the kitchen, the open-concept living and dining areas create an inviting space for relaxation and entertainment. The living room also boasts large windows. On the second level you have the primary bedroom and another ample bedroom along with a full bathroom which features jetted tub and separate shower. The 3 third level features a cozy family room with easy access to the backyard, perfect for movie nights or game days, an another bathroom. On the fourth level you will find an spacious bedroom , laundry room and a vast storage/den. Additionally there is also a double detached garage and generous backyard. Don't miss out on this one!

Built in 2009

## Essential Information



MLS® # A2183451  
 Price \$460,000  
 Bedrooms 3  
 Bathrooms 2.00  
 Full Baths 2  
 Square Footage 924  
 Acres 0.08  
 Year Built 2009  
 Type Residential  
 Sub-Type Detached  
 Style 4 Level Split  
 Status Active

**Community Information**

Address 724 Florence Ho Leong Cres  
 Subdivision Legacy Ridge / Hardieville  
 City Lethbridge  
 County Lethbridge  
 Province Alberta  
 Postal Code T1H5R5

**Amenities**

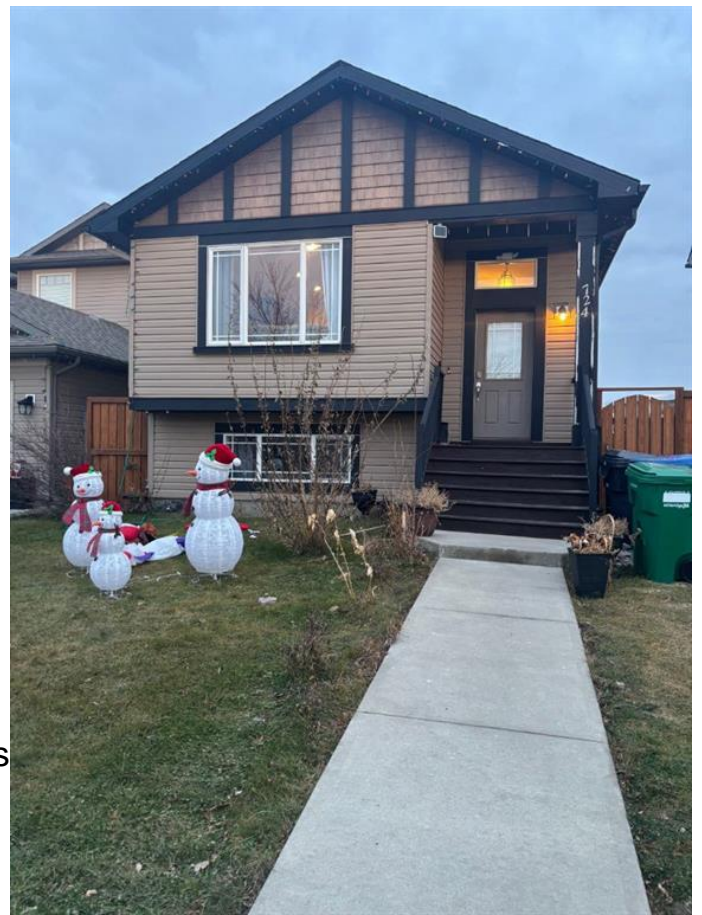
Parking Spaces 2  
 Parking Double Garage Detached  
 # of Garages 2

**Interior**

Interior Features Ceiling Fan(s), Open Floorpl  
 Sump Pump(s), Tankless Ho  
 Appliances Dishwasher, Electric Stove,  
 Heater  
 Heating Forced Air, Natural Gas  
 Cooling None  
 Has Basement Yes  
 Basement Finished, Full, Walk-Out

**Exterior**

Exterior Features Private Entrance, Garden  
 Lot Description Landscaped



Roof	Asphalt Shingle
Construction	Vinyl Siding
Foundation	Poured Concrete

### **Additional Information**

Date Listed	December 14th, 2024
Days on Market	114
Zoning	R-SL

### **Listing Details**

Listing Office	RE/MAX REAL ESTATE - LETHBRIDGE
----------------	---------------------------------

Data is supplied by Pillar 9â,,ç MLSÂ® System. Pillar 9â,,ç is the owner of the copyright in its MLSÂ® System. Data is deemed reliable but is not guaranteed accurate by Pillar 9â,,ç. The trademarks MLSÂ®, Multiple Listing ServiceÂ® and the associated logos are owned by The Canadian Real Estate Association (CREA) and identify the quality of services provided by real estate professionals who are members of CREA. Used under license.