

\$174,999 - 84, 2410 Division Avenue N, Medicine Hat

MLS® #A2189440

\$174,999

0 Bedroom, 0.00 Bathroom,
Commercial on 0.00 Acres

Northeast Crescent Heights, Medicine Hat,
Alberta

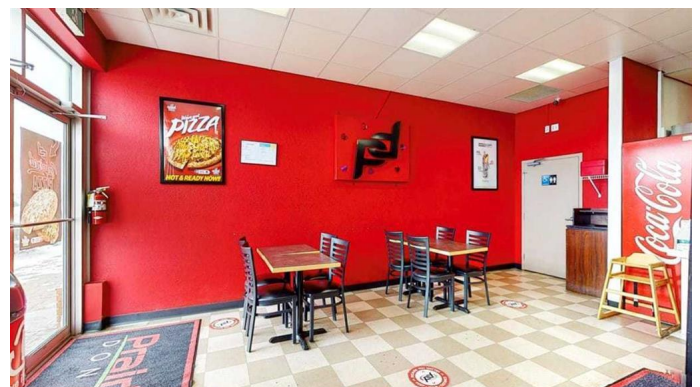
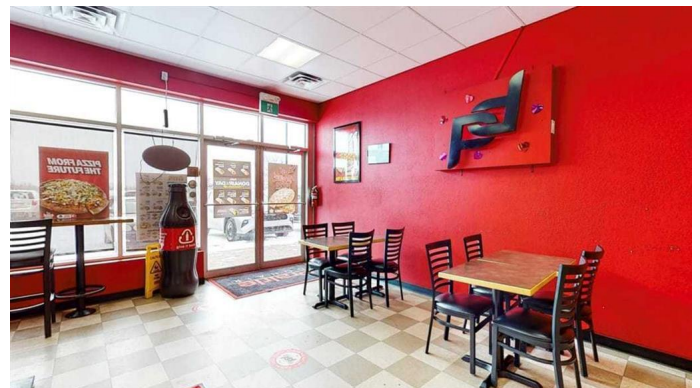
Step into this well-established franchise and start your journey as a business owner today! The menu features a variety of healthy food options, with the recent addition of a pizza oven offering even greater menu expansion opportunities. Franchisee approval by the franchisor is required, and comprehensive training will be provided. Alternatively, buyers also have the option to introduce their own concept. Situated in a busy shopping center alongside other well-established businesses, this location ensures high visibility and foot traffic. Don't miss out on this incredible opportunity to own a thriving business!

**** THIS IS
BUSINESS ASSET SALE ONLY - REAL
PROPERTY IS NOT INCLUDED****

Built in 2014

Essential Information

| | |
|------------|------------|
| MLS® # | A2189440 |
| Price | \$174,999 |
| Bathrooms | 0.00 |
| Acres | 0.00 |
| Year Built | 2014 |
| Type | Commercial |
| Sub-Type | Business |
| Status | Active |



Community Information

| | |
|-------------|----------------------------|
| Address | 84, 2410 Division Avenue N |
| Subdivision | Northeast Crescent Heights |
| City | Medicine Hat |
| County | Medicine Hat |
| Province | Alberta |
| Postal Code | T1A 0C3 |

Additional Information

| | |
|----------------|--------------------|
| Date Listed | January 24th, 2025 |
| Days on Market | 90 |

Listing Details

| | |
|----------------|------------------------|
| Listing Office | Greater Property Group |
|----------------|------------------------|

Data is supplied by Pillar 9â„¢ MLS® System. Pillar 9â„¢ is the owner of the copyright in its MLS® System. Data is deemed reliable but is not guaranteed accurate by Pillar 9â„¢. The trademarks MLS®, Multiple Listing Service® and the associated logos are owned by The Canadian Real Estate Association (CREA) and identify the quality of services provided by real estate professionals who are members of CREA. Used under license.