

\$224,900 - 101, 9856 97 Avenue, Grande Prairie

MLS® #A2196164

\$224,900

0 Bedroom, 0.00 Bathroom,
Commercial on 0.00 Acres

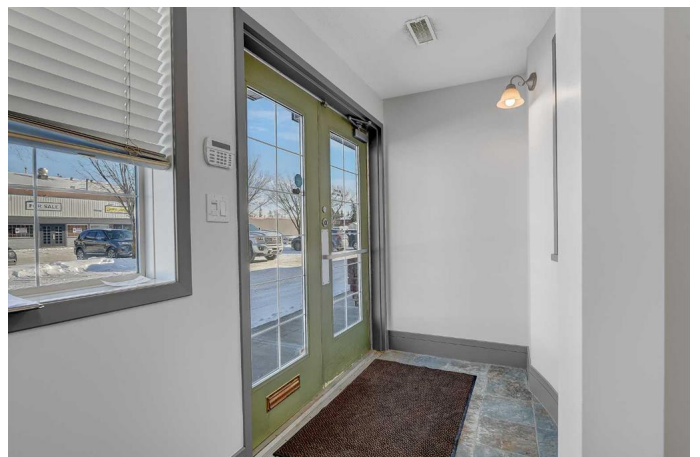
Central Business District., Grande Prairie,
Alberta

Own Your Future in This Stylish Commercial Condo! Immediate possession available! Step into a bright, contemporary 2-storey corner unit in the sought-after Station 2000. This meticulously maintained space offers a flexible layout, perfect for your growing business. Featuring 5 private offices (easily expandable to 7+ workstations), fresh paint, and updated lighting, you'll find a professional and inviting atmosphere. The main level boasts a welcoming reception area, kitchenette, 2 offices and ample storage, while the upper level showcases stunning hardwood floors, expansive windows, and 3 offices including a huge versatile 13x22ft office suite with built-in desk and cabinets. Enjoy the convenience of worry-free ownership with condo fees covering all exterior maintenance, snow removal, and more. Stop paying rent and invest in your business's success today!

Built in 2000

Essential Information

| | |
|------------|------------|
| MLS® # | A2196164 |
| Price | \$224,900 |
| Bathrooms | 0.00 |
| Acres | 0.00 |
| Year Built | 2000 |
| Type | Commercial |
| Sub-Type | Office |



Status Active

Community Information

Address 101, 9856 97 Avenue
Subdivision Central Business District.
City Grande Prairie
County Grande Prairie
Province Alberta
Postal Code T8V 7K2

Additional Information

Date Listed February 25th, 2025
Days on Market 62
Zoning CC

Listing Details

Listing Office Royal LePage - The Realty Group

Data is supplied by Pillar 9â„¢ MLS® System. Pillar 9â„¢ is the owner of the copyright in its MLS® System. Data is deemed reliable but is not guaranteed accurate by Pillar 9â„¢. The trademarks MLS®, Multiple Listing Service® and the associated logos are owned by The Canadian Real Estate Association (CREA) and identify the quality of services provided by real estate professionals who are members of CREA. Used under license.