

\$69,999 - 118 Grenfell Avenue, Suffield

MLS® #A2198750

\$69,999

0 Bedroom, 0.00 Bathroom,
Land on 0.89 Acres

NONE, Suffield, Alberta

Take a look at this 206 ft x 169 ft lot located on the West side of First Street in Suffield with all services to the property line including water, gas, sewer, and electrical! Zoned as Hamlet Commercial, this is the perfect spot for a new business with plenty of options for this location, all development would be subject to Cypress County's approval. Lot size has been taken from the Plan of Subdivision provided by Cypress County.

Essential Information

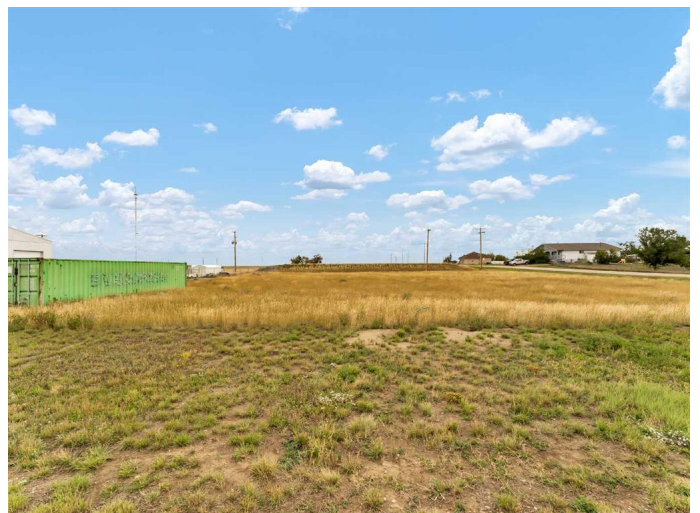
MLS® #	A2198750
Price	\$69,999
Bathrooms	0.00
Acres	0.89
Type	Land
Sub-Type	Commercial Land
Status	Active

Community Information

Address	118 Grenfell Avenue
Subdivision	NONE
City	Suffield
County	Cypress County
Province	Alberta
Postal Code	T0J 2N0

Additional Information

Date Listed	March 4th, 2025
-------------	-----------------



Days on Market	56
Zoning	HC

Listing Details

Listing Office	RE/MAX MEDALTA REAL ESTATE
----------------	----------------------------

Data is supplied by Pillar 9â„¢ MLS® System. Pillar 9â„¢ is the owner of the copyright in its MLS® System. Data is deemed reliable but is not guaranteed accurate by Pillar 9â„¢. The trademarks MLS®, Multiple Listing Service® and the associated logos are owned by The Canadian Real Estate Association (CREA) and identify the quality of services provided by real estate professionals who are members of CREA. Used under license.