

\$169,900 - 35 Parlby Crescent, Lacombe

MLS® #A2200270

\$169,900

0 Bedroom, 0.00 Bathroom,
Land on 0.25 Acres

Metcalf Ridge, Lacombe, Alberta

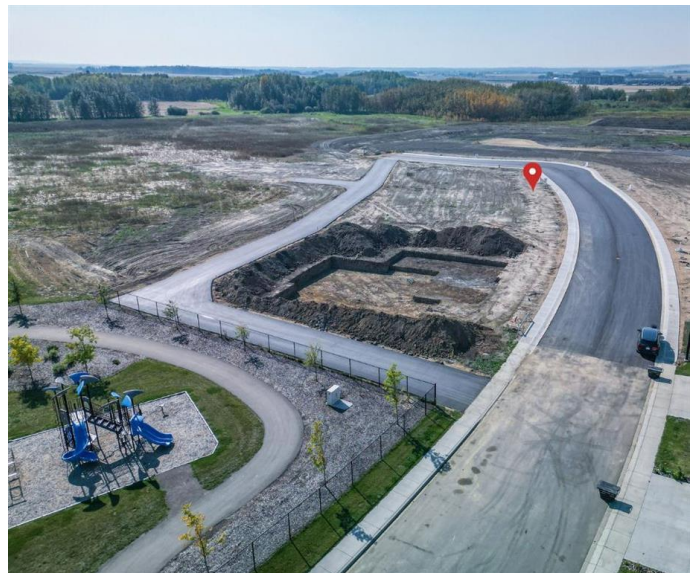
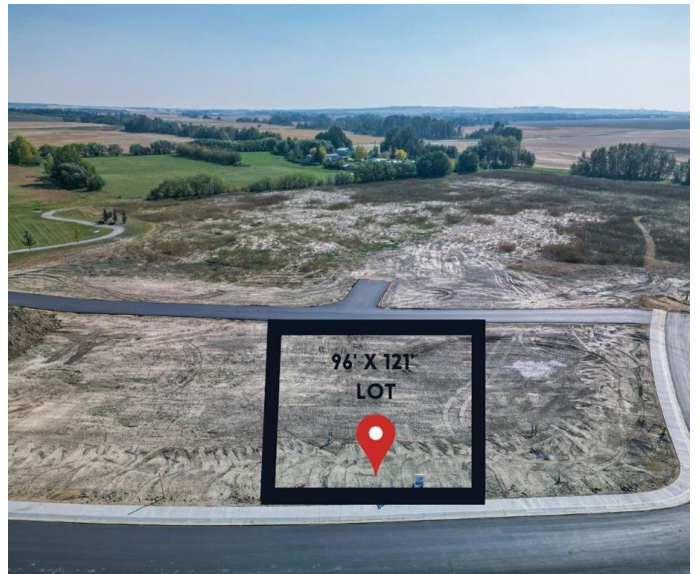
Build your dream home on a 96' X 121' lot in Metcalf Ridge! This fully serviced lot is ready to build on and features a paved back ally! You have the freedom to choose your builder and create a home with ample room for a monster garage plus still have enough room for RV parking. This family-friendly community offers easy access to Highway 12, a large park with walking trails and picnic areas. Whether you're looking for a starter home or an upgrade, Metcalf Ridge lots are available to suit a range of house sizes.

Essential Information

| | |
|-----------|------------------|
| MLS® # | A2200270 |
| Price | \$169,900 |
| Bathrooms | 0.00 |
| Acres | 0.25 |
| Type | Land |
| Sub-Type | Residential Land |
| Status | Active |

Community Information

| | |
|-------------|--------------------|
| Address | 35 Parlby Crescent |
| Subdivision | Metcalf Ridge |
| City | Lacombe |
| County | Lacombe |
| Province | Alberta |
| Postal Code | T4L 0J9 |



Additional Information

| | |
|----------------|-----------------|
| Date Listed | March 7th, 2025 |
| Days on Market | 45 |
| Zoning | R1 |

Listing Details

Listing Office RE/MAX real estate central alberta

Data is supplied by Pillar 9â„¸ MLSÂ® System. Pillar 9â„¸ is the owner of the copyright in its MLSÂ® System. Data is deemed reliable but is not guaranteed accurate by Pillar 9â„¸. The trademarks MLSÂ®, Multiple Listing ServiceÂ® and the associated logos are owned by The Canadian Real Estate Association (CREA) and identify the quality of services provided by real estate professionals who are members of CREA. Used under license.