

\$2,150,000 - 24231 Burma Road, Rural Rocky View County

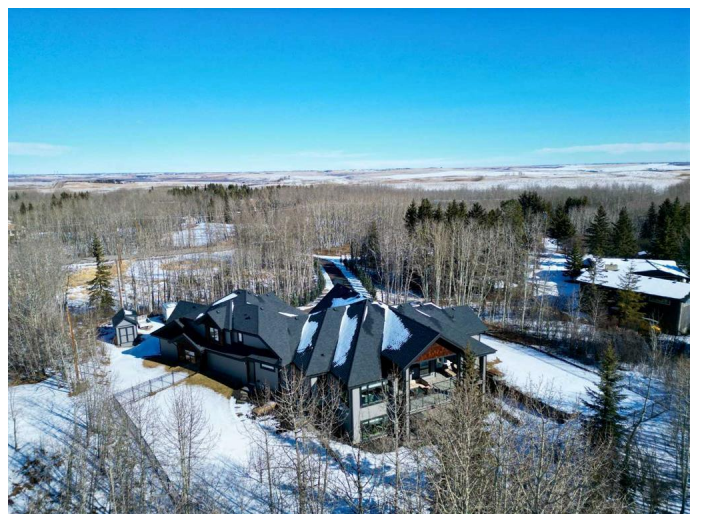
MLS® #A2201152

\$2,150,000

5 Bedroom, 4.00 Bathroom, 3,582 sqft
Residential on 2.03 Acres

Bearspaw_Calg, Rural Rocky View County,
Alberta

Welcome to this stunning contemporary estate, privately nestled on 2 acres of beautifully treed, with impressive landscaped grounds in the prestigious community of Bearspaw. With an emphasis on privacy, luxury, and refined living, this masterfully designed 1.5-storey walkout bungalow offers over 6,100 sq ft of exquisitely finished living space—perfectly blending sophistication with comfort in a tranquil setting. A paved, gated driveway winds through lush foliage, unveiling a striking modern exterior with an oversized triple garage with epoxy flooring, in-floor heating, and soaring ceilings—ideal for car enthusiasts or those needing generous storage. Step inside and be instantly captivated by the expansive great room, where soaring vaulted ceilings, a dramatic fireplace with tile surround, and floor-to-ceiling windows frame the illuminated, south-facing backyard. This open-concept main floor is both grand and inviting, flooded with natural light and dressed in exquisite flooring and chic designer lighting. The chef-inspired kitchen is a showstopper—featuring sleek quartz countertops, Jenn-Air stainless steel appliances, gas range, massive island with breakfast bar seating, and a secondary prep kitchen complete with bar fridge and additional refrigerator. Just off the kitchen, the eating nook leads through garden doors to a massive



south-facing deck, creating a seamless indoor-outdoor experience, perfect for entertaining or enjoying peaceful forest views. The primary retreat, ideally located on the main floor, offers serene luxury with private access to the deck, allowing you to start your mornings with coffee in the sun and end your days with a glass of wine under the stars. The spa-inspired ensuite showcases in-floor heating, double vanity sinks, a stand alone soaker tub, a massive walk-in shower, and a custom walk-in closet with built-ins. Thoughtfully separated on the opposite wing, two spacious upper-level bedrooms feature large walk-in closets, a homework or reading nook, and share a beautiful 4-piece bathroom with double vanity and walk-in shower—a perfect setup for children or guests. The walkout lower level is equally spectacular with access to the lower level patio space and premium hot tub, with in-floor heating and bright, oversized windows throughout. This level includes a large rec room and entertainment space with a wet bar, an ideal home gym, two additional bedrooms (one with direct patio access), and a stylish 3-piece bathroom. Additional highlights include a massive mudroom with custom built-ins, a spacious laundry room with sink and storage, air conditioning, and a fully fenced backyard oasis with mature trees, long paved driveway, and a 14ft x 8ft storage shed. Enjoy the best of both worlds—the peace and privacy of country living, just 4 minutes from Calgary's city limits and Rocky Ridge amenities. Whether entertaining, relaxing, or raising a family, this estate offers the perfect setting to live, grow, and thrive.

Built in 2018

Essential Information

MLS® #

A2201152

Price	\$2,150,000
Bedrooms	5
Bathrooms	4.00
Full Baths	3
Half Baths	1
Square Footage	3,582
Acres	2.03
Year Built	2018
Type	Residential
Sub-Type	Detached
Style	1 and Half Storey, Acreage with Residence
Status	Active

Community Information

Address	24231 Burma Road
Subdivision	Bearspaw_Calg
City	Rural Rocky View County
County	Rocky View County
Province	Alberta
Postal Code	T3R 1B7

Amenities

Parking	Heated Garage, Oversized, Triple Garage Attached
# of Garages	3

Interior

Interior Features	Breakfast Bar, Closet Organizers, Double Vanity, High Ceilings, Kitchen Island, Open Floorplan, Quartz Counters, Walk-In Closet(s), Wet Bar
Appliances	Built-In Oven, Dishwasher, Dryer, Garage Control(s), Garburator, Gas Cooktop, Range Hood, Refrigerator, Washer, Window Coverings
Heating	In Floor, Forced Air
Cooling	Central Air
Fireplace	Yes
# of Fireplaces	1
Fireplaces	Gas
Has Basement	Yes
Basement	Finished, Full, Walk-Out

Exterior

Exterior Features	Private Entrance, Private Yard, Storage
Lot Description	Back Yard, Landscaped, Lawn, Many Trees, Paved, Private
Roof	Asphalt Shingle
Construction	Composite Siding, Stone, Wood Frame
Foundation	Poured Concrete

Additional Information

Date Listed	March 13th, 2025
Days on Market	1
Zoning	R-CRD

Listing Details

Listing Office	RE/MAX First
----------------	--------------

Data is supplied by Pillar 9â„¢ MLSÂ® System. Pillar 9â„¢ is the owner of the copyright in its MLSÂ® System. Data is deemed reliable but is not guaranteed accurate by Pillar 9â„¢. The trademarks MLSÂ®, Multiple Listing ServiceÂ® and the associated logos are owned by The Canadian Real Estate Association (CREA) and identify the quality of services provided by real estate professionals who are members of CREA. Used under license.