

\$161,950 - 46 721022 Range Road 54, Rural Grande Prairie No. 1, County of

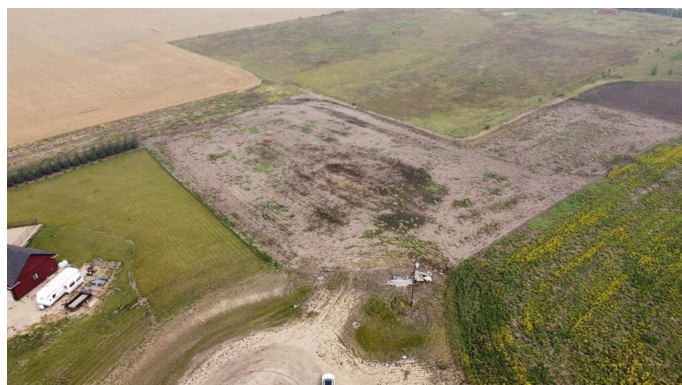
MLS® #A2201386

\$161,950

0 Bedroom, 0.00 Bathroom,
Land on 2.68 Acres

Goldenrod Estates, Rural Grande Prairie No. 1, County of, Alberta

Goldenrod Estates, located just minutes east of the City of Grande Prairie with easy access to both highway 43 and highway 670. This is a beautiful subdivision with an established community that is maintained by the County of Grande Prairie. Features a playground, school bus route and a convenient 5 minutes from city limits. Located at the end of a cul de sac and backing onto working farmland, you can relax knowing you will have unobstructed views sitting from your future deck. Bring your favourite builder and construct your dream home, nestled on your 2.68 acres of ready to construct land. This lot is neighbored by two pre-existing dream homes and yours will be the third. Zoned for Harry Balfour county school located on a bus route.



Essential Information

MLS® #	A2201386
Price	\$161,950
Bathrooms	0.00
Acres	2.68
Type	Land
Sub-Type	Residential Land
Status	Active

Community Information

Address	46 721022 Range Road 54
Subdivision	Goldenrod Estates
City	Rural Grande Prairie No. 1, County of
County	Grande Prairie No. 1, County of
Province	Alberta
Postal Code	T8X4G8

Exterior

Exterior Features None

Additional Information

Date Listed March 11th, 2025

Days on Market 44

Zoning CR-5

Listing Details

Listing Office Grassroots Realty Group Ltd.

Data is supplied by Pillar 9â„¢ MLSÂ® System. Pillar 9â„¢ is the owner of the copyright in its MLSÂ® System. Data is deemed reliable but is not guaranteed accurate by Pillar 9â„¢. The trademarks MLSÂ®, Multiple Listing ServiceÂ® and the associated logos are owned by The Canadian Real Estate Association (CREA) and identify the quality of services provided by real estate professionals who are members of CREA. Used under license.