

\$239,900 - 1, 897 Mt Sundance Manor W, Lethbridge

MLS® #A2201535

\$239,900

2 Bedroom, 1.00 Bathroom, 856 sqft
Residential on 0.00 Acres

Sunridge, Lethbridge, Alberta

Located in Lethbridge's Sunridge, this well-maintained condo offers comfortable living with great amenities. The kitchen features stainless steel appliances, an island, and solid-surface countertops. The living area is open to the kitchen and filled with natural light. Two bedrooms and a four-piece bathroom are also included. All exterior maintenance, including snow removal and lawn care, is taken care of, making this property perfect for students, investors, or first-time buyers.

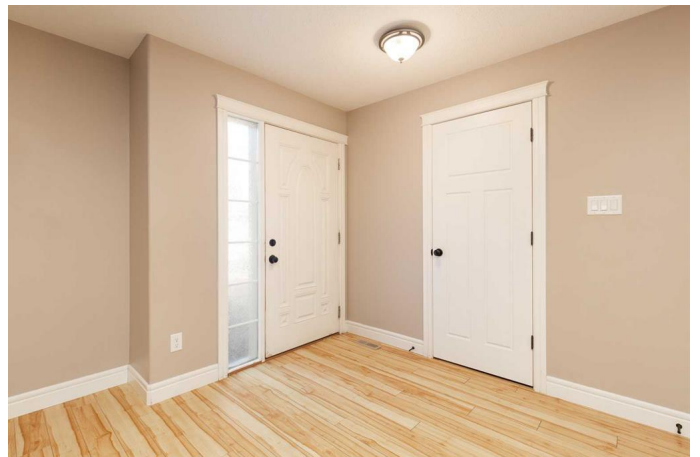
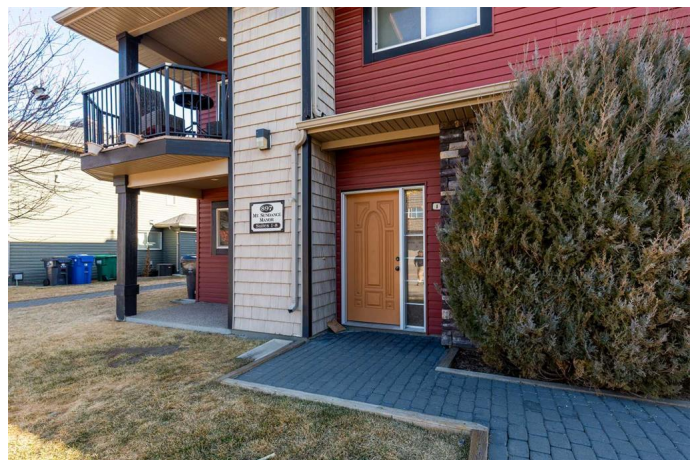
Built in 2009

Essential Information

MLS® #	A2201535
Price	\$239,900
Bedrooms	2
Bathrooms	1.00
Full Baths	1
Square Footage	856
Acres	0.00
Year Built	2009
Type	Residential
Sub-Type	Apartment
Style	Single Level Unit
Status	Active

Community Information

Address	1, 897 Mt Sundance Manor W
Subdivision	Sunridge



City	Lethbridge
County	Lethbridge
Province	Alberta
Postal Code	T1J 1X7

Amenities

Amenities	Parking, Snow Removal, Storage
Parking Spaces	1
Parking	Assigned, Off Street

Interior

Interior Features	Kitchen Island, Open Floorplan, Vinyl Windows
Appliances	Dishwasher, Dryer, Microwave Hood Fan, Refrigerator, Stove(s), Washer, Window Coverings
Heating	Forced Air
Cooling	None
# of Stories	2
Basement	None

Exterior

Exterior Features	Storage
Lot Description	Landscaped
Roof	Asphalt Shingle
Construction	Vinyl Siding, Wood Frame

Additional Information

Date Listed	March 13th, 2025
Days on Market	1
Zoning	R-50

Listing Details

Listing Office	Lethbridge Real Estate.com
----------------	----------------------------

Data is supplied by Pillar 9â„¢ MLSÂ® System. Pillar 9â„¢ is the owner of the copyright in its MLSÂ® System. Data is deemed reliable but is not guaranteed accurate by Pillar 9â„¢. The trademarks MLSÂ®, Multiple Listing ServiceÂ® and the associated logos are owned by The Canadian Real Estate Association (CREA) and identify the quality of services provided by real estate professionals who are members of CREA. Used under license.