

# \$259,000 - 516 Birch Drive, Maidstone

MLS® #A2202598

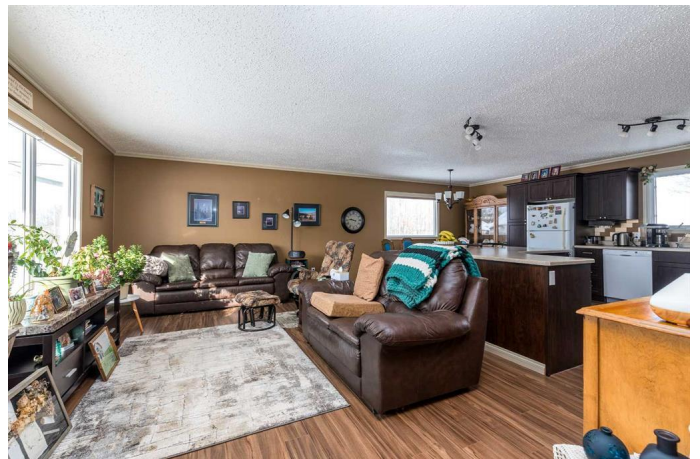
## \$259,000

4 Bedroom, 3.00 Bathroom, 1,253 sqft  
Residential on 0.13 Acres

NONE, Maidstone, Saskatchewan

This well-built and spacious 1,253 sq. ft. bungalow in Maidstone, SK, offers modern updates, quality craftsmanship, and a fantastic layout for comfortable living. With a stucco exterior and a high-efficiency furnace, this home is built for durability and energy efficiency. Inside, the kitchen and dining area feature brand-new laminate flooring, while the updated main 4-piece bathroom adds a fresh touch. A convenient 2-piece bathroom is located off the entry, with provisions for main-floor laundry.

The fully developed basement includes additional bedrooms, a cozy living room, and a stylish 3-piece bathroom. The standout feature is the stunning epoxy-coated concrete flooring, offering both beauty and durability. Outside, the property boasts a double detached garage and a well-maintained lawn with underground sprinklers for easy care. Move-in ready with modern upgrades, this home is perfect for families or anyone looking for a stylish, well-kept space in a great location. Don't miss this opportunity—schedule a showing today! Check out the 3D virtual Tour!



Built in 1975

## Essential Information

|          |           |
|----------|-----------|
| MLS® #   | A2202598  |
| Price    | \$259,000 |
| Bedrooms | 4         |

|                |             |
|----------------|-------------|
| Bathrooms      | 3.00        |
| Full Baths     | 2           |
| Half Baths     | 1           |
| Square Footage | 1,253       |
| Acres          | 0.13        |
| Year Built     | 1975        |
| Type           | Residential |
| Sub-Type       | Detached    |
| Style          | Bungalow    |
| Status         | Active      |

### **Community Information**

|             |                 |
|-------------|-----------------|
| Address     | 516 Birch Drive |
| Subdivision | NONE            |
| City        | Maidstone       |
| County      | Saskatchewan    |
| Province    | Saskatchewan    |
| Postal Code | S0M 1M0         |

### **Amenities**

|                |   |
|----------------|---|
| Parking Spaces | 2   |
| Parking        | Double Garage Detached, Driveway, Insulated |
| # of Garages   | 2   |

### **Interior**

|                   |   |
|-------------------|---|
| Interior Features | Central Vacuum, Kitchen Island, Laminate Counters, Open Floorplan, Storage                        |
| Appliances        | Dishwasher, Garage Control(s), Range Hood, Refrigerator, Stove(s), Washer/Dryer, Window Coverings |
| Heating           | Forced Air, Natural Gas, Floor Furnace  |
| Cooling           | None  |
| Has Basement      | Yes   |
| Basement          | Finished, Full  |

### **Exterior**

|                   |   |
|-------------------|---|
| Exterior Features | Storage   |
| Lot Description   | Back Yard, City Lot, Corner Lot, Few Trees, Front Yard, Irregular Lot, Lawn |
| Roof              | Asphalt Shingle   |

|              |                                     |
|--------------|-------------------------------------|
| Construction | Brick, Concrete, Stucco, Wood Frame |
| Foundation   | Wood                                |

### **Additional Information**

|                |                  |
|----------------|------------------|
| Date Listed    | March 17th, 2025 |
| Days on Market | 37               |
| Zoning         | R1               |

### **Listing Details**

|                |                  |
|----------------|------------------|
| Listing Office | CENTURY 21 DRIVE |
|----------------|------------------|

Data is supplied by Pillar 9â,,ç MLSÂ® System. Pillar 9â,,ç is the owner of the copyright in its MLSÂ® System. Data is deemed reliable but is not guaranteed accurate by Pillar 9â,,ç. The trademarks MLSÂ®, Multiple Listing ServiceÂ® and the associated logos are owned by The Canadian Real Estate Association (CREA) and identify the quality of services provided by real estate professionals who are members of CREA. Used under license.