

\$293,000 - 949 16 Street S, Lethbridge

MLS® #A2206127

\$293,000

3 Bedroom, 1.00 Bathroom, 1,370 sqft
Residential on 0.15 Acres

London Road, Lethbridge, Alberta

Lovely cozy home in excellent location, one block to hospital and other amenities. Excellent starter or revenue property. Well-maintained inside and out with a huge yard suitable for a double garage. Some windows replaced and shingles only 2-3 years old. Almost new furnace. M/F family room has a wood burning stove. There is no basement but main floor plan is excellent and 2 additional bedrooms upstairs with one on the main.

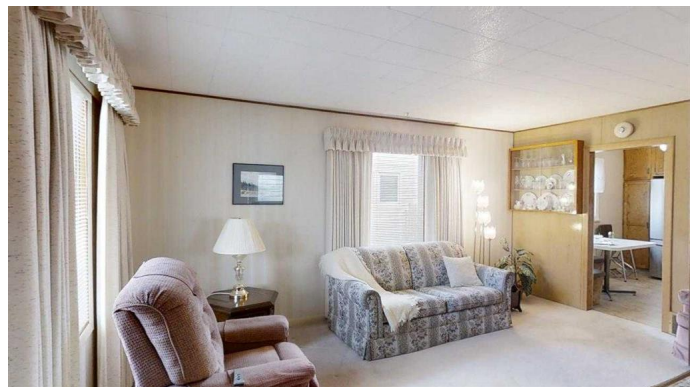
Built in 1948

Essential Information

MLS® #	A2206127
Price	\$293,000
Bedrooms	3
Bathrooms	1.00
Full Baths	1
Square Footage	1,370
Acres	0.15
Year Built	1948
Type	Residential
Sub-Type	Detached
Style	1 and Half Storey
Status	Active

Community Information

Address	949 16 Street S
Subdivision	London Road



City	Lethbridge
County	Lethbridge
Province	Alberta
Postal Code	T1J 3C1

Amenities

Parking Spaces	2
Parking	Carport, Off Street

Interior

Interior Features	See Remarks
Appliances	Refrigerator, Stove(s), Window Coverings
Heating	Forced Air, Natural Gas, Wood Stove
Cooling	None
Fireplace	Yes
# of Fireplaces	1
Fireplaces	Great Room, Wood Burning Stove
Basement	None

Exterior

Exterior Features	Garden
Lot Description	Back Yard
Roof	Asphalt Shingle
Construction	See Remarks
Foundation	See Remarks

Additional Information

Date Listed	March 26th, 2025
Days on Market	8
Zoning	R-L

Listing Details

Listing Office	Maxwell Capital Realty - Lethbridge
----------------	-------------------------------------

Data is supplied by Pillar 9â„¢ MLSÂ® System. Pillar 9â„¢ is the owner of the copyright in its MLSÂ® System. Data is deemed reliable but is not guaranteed accurate by Pillar 9â„¢. The trademarks MLSÂ®, Multiple Listing ServiceÂ® and the associated logos are owned by The Canadian Real Estate Association (CREA) and identify the quality of services provided by real estate professionals who are members of CREA. Used under license.