

\$409,900 - 233 Bridlewood Lane Sw, Calgary

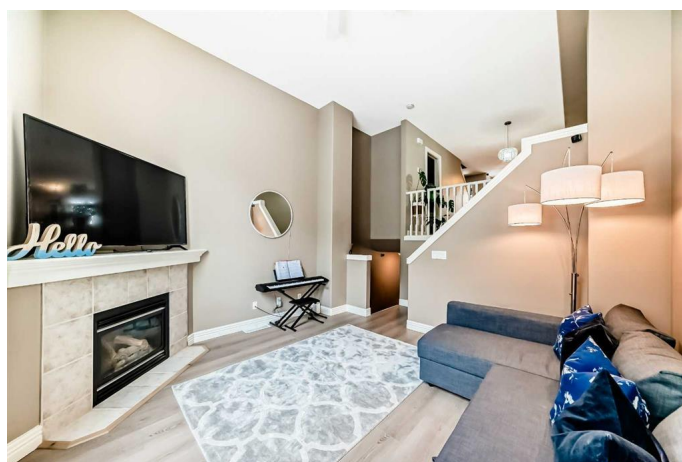
MLS® #A2206444

\$409,900

2 Bedroom, 2.00 Bathroom, 1,217 sqft
Residential on 0.02 Acres

Bridlewood, Calgary, Alberta

Welcome to 233 Bridlewood Lane SW – a truly unique 2-bedroom townhouse with a new vinyl plank flooring in year 2024 that stands out from the crowd! Features a beautifully designed split-level layout and the spacious living room, with its soaring 12.5-foot ceilings, corner fireplace and bright windows, fill the space with an abundance of natural light. Step outside onto your private south-facing deck, where the best place for your summer relaxation. Up a few steps, the kitchen and dining area greet you with gorgeous hardwood floors, sleek granite countertops, and stainless-steel appliances. A convenient 2 pcs bathroom is also located on this level for easy access. On the top floor, you'll find two generously sized bedrooms, a full bathroom, and a laundry room – offering comfort and convenience for everyday living. A single attached garage completes this wonderful home, located in the desirable Bridlewood community. You'll love the proximity to parks, schools, shopping, and quick access to Stoney Trail. Don't miss your chance to make this incredible property your own!



Built in 1999

Essential Information

MLS® #	A2206444
Price	\$409,900
Bedrooms	2

Bathrooms	2.00
Full Baths	1
Half Baths	1
Square Footage	1,217
Acres	0.02
Year Built	1999
Type	Residential
Sub-Type	Row/Townhouse
Style	3 Level Split
Status	Active

Community Information

Address	233 Bridlewood Lane Sw
Subdivision	Bridlewood
City	Calgary
County	Calgary
Province	Alberta
Postal Code	T2Y3X8

Amenities

Amenities	Playground
Parking Spaces	1
Parking	Single Garage Attached, Front Drive, Insulated
# of Garages	1

Interior

Interior Features	Granite Counters, High Ceilings, Open Floorplan
Appliances	Dishwasher, Dryer, Electric Stove, Garage Control(s), Range Hood, Refrigerator, Washer
Heating	Forced Air, Natural Gas
Cooling	None
Fireplace	Yes
# of Fireplaces	1
Fireplaces	Gas, Living Room, Mantle
Has Basement	Yes
Basement	Unfinished, Partial

Exterior

Exterior Features	Playground
-------------------	------------

Lot Description	Greenbelt, Interior Lot
Roof	Asphalt Shingle
Construction	Vinyl Siding, Wood Frame
Foundation	Poured Concrete

Additional Information

Date Listed	April 3rd, 2025
Days on Market	20
Zoning	M-1

Listing Details

Listing Office	RE/MAX Real Estate (Central)
----------------	------------------------------

Data is supplied by Pillar 9â„¸ MLSÂ® System. Pillar 9â„¸ is the owner of the copyright in its MLSÂ® System. Data is deemed reliable but is not guaranteed accurate by Pillar 9â„¸. The trademarks MLSÂ®, Multiple Listing ServiceÂ® and the associated logos are owned by The Canadian Real Estate Association (CREA) and identify the quality of services provided by real estate professionals who are members of CREA. Used under license.