

# \$335,000 - 11402 82 Avenue, Grande Prairie

MLS® #A2206483

## \$335,000

3 Bedroom, 3.00 Bathroom, 1,345 sqft

Residential on 0.08 Acres

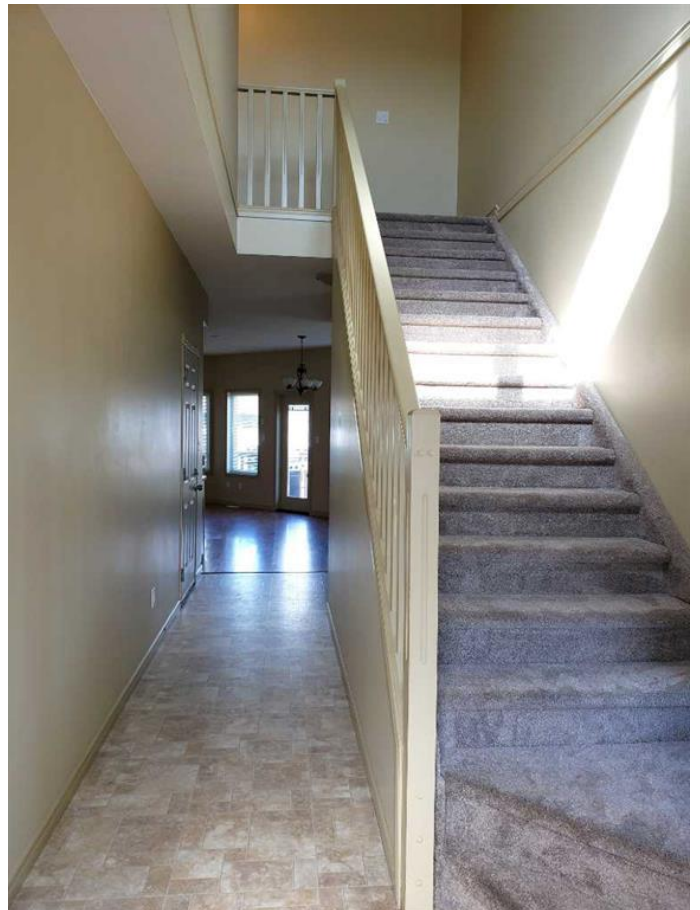
Westpointe., Grande Prairie, Alberta

Attractive 2 Storey Duplex with a single car garage located in Westpointe subdivision in a quiet cul de sac. This home has a nice design offering just over 1400 sq.ft. on the main & upper level. The entrance on the main floor has a high ceiling open to the upper floor. From the entrance you walk straight into the kitchen, dining and living room area. The kitchen has maple cabinets, an island & corner pantry. The island has the sink & overlooks the living that features a gas fireplace & tons of windows looking out into the yard. There is a 2 pc. guest bathroom on the main floor across the hall to the garage entrance. The upper level has a spacious master bedroom with ensuite bathroom, second & third bedrooms & 4 pc. main bathroom. There is a large developed room in the basement and some additional unfinished space. This home will be vacant on April 30, 2025.

Built in 2006

## Essential Information

MLS® #	A2206483
Price	\$335,000
Bedrooms	3
Bathrooms	3.00
Full Baths	2
Half Baths	1
Square Footage	1,345
Acres	0.08



Year Built	2006
Type	Residential
Sub-Type	Semi Detached
Style	2 Storey, Back Split
Status	Active

### Community Information

Address	11402 82 Avenue
Subdivision	Westpointe.
City	Grande Prairie
County	Grande Prairie
Province	Alberta
Postal Code	T8W 2Y6

### Amenities

Parking Spaces	3
Parking	Single Garage Attached
# of Garages	1

### Interior

Interior Features	Kitchen Island, Pantry
Appliances	Dishwasher, Dryer, Garage Control(s), Refrigerator, Stove(s), Washer, Window Coverings
Heating	Fireplace(s), Forced Air, Natural Gas
Cooling	None
Fireplace	Yes
# of Fireplaces	1
Fireplaces	Gas, Living Room
Has Basement	Yes
Basement	Full, Partially Finished

### Exterior

Exterior Features	Private Yard
Lot Description	Back Yard, Irregular Lot, City Lot
Roof	Asphalt Shingle
Construction	Brick, Vinyl Siding
Foundation	Poured Concrete

### Additional Information

Date Listed

March 27th, 2025

Days on Market

29

Zoning

RC

Listing Details

Listing Office

Century 21 Grande Prairie Real Estate Ltd.



Data is supplied by Pillar 9â„¢ MLS® System. Pillar 9â„¢ is the owner of the copyright in its MLS® System. Data is deemed reliable but is not guaranteed accurate by Pillar 9â„¢. The trademarks MLS®, Multiple Listing Service® and the associated logos are owned by The Canadian Real Estate Association (CREA) and identify the quality of services provided by real estate professionals who are members of CREA. Used under license.