

# \$499,900 - 3108 66 Avenue Court, Lloydminster

MLS® #A2211648

**\$499,900**

4 Bedroom, 3.00 Bathroom, 1,497 sqft

Residential on 0.18 Acres

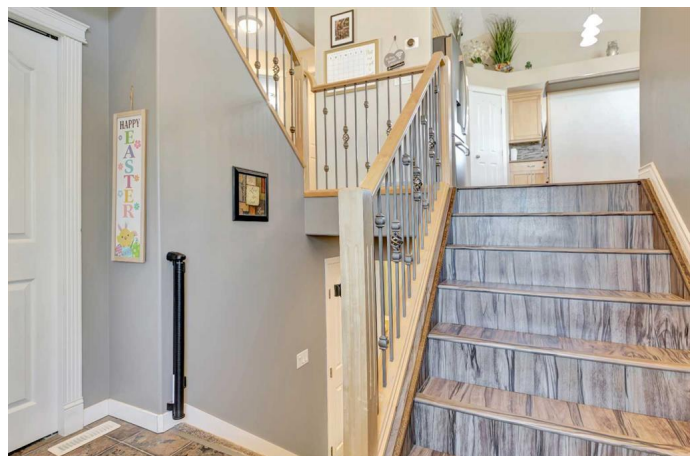
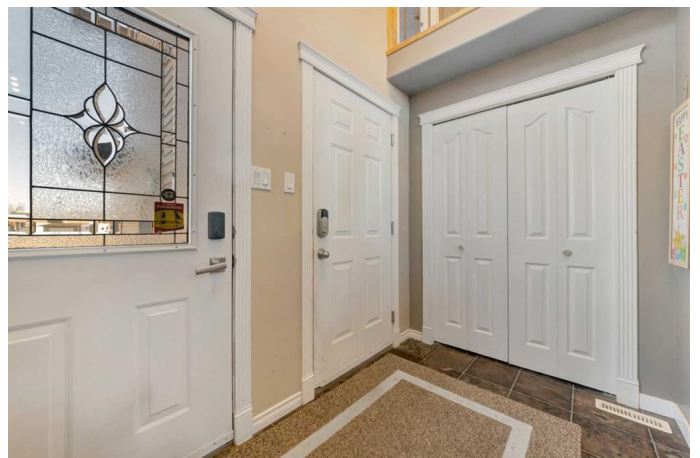
Parkview Estates, Lloydminster, Alberta

Tucked away in a quiet cul-de-sac in Lloydminster's sought-after Parkview neighbourhood, 3108 66 Avenue Court checks all the boxes. This 4-bedroom, 3-bathroom home offers over 1,400 sq.ft of living space with vaulted ceilings, central A/C, and a cozy gas fireplace in the family room. The kitchen is built for function and style, featuring a large island and pantry for tons of storage. The primary bedroom impresses with a spacious walk-in closet and a jetted tub in the ensuite—perfect for winding down. Outside, the oversized yard gives you room to breathe, plus RV parking and a heated double attached garage. All are within walking distance to schools and parks. 3D Virtual Tour Available! Sellers will review all offers on Friday, April 18, 2025, at 5:00 p.m.

Built in 2005

## Essential Information

MLS® #	A2211648
Price	\$499,900
Bedrooms	4
Bathrooms	3.00
Full Baths	3
Square Footage	1,497
Acres	0.18
Year Built	2005



Type	Residential
Sub-Type	Detached
Style	Modified Bi-Level
Status	Active

### Community Information

Address	3108 66 Avenuecourt
Subdivision	Parkview Estates
City	Lloydminster
County	Lloydminster
Province	Alberta
Postal Code	T9V 3H9

### Amenities

Parking Spaces	3
Parking	Concrete Driveway, Double Garage Attached, Heated Garage, RV Access/Parking
# of Garages	2

### Interior

Interior Features	Pantry, Vaulted Ceiling(s), Walk-In Closet(s), Jetted Tub
Appliances	Dishwasher, Dryer, Microwave Hood Fan, Refrigerator, Stove(s), Washer, Window Coverings
Heating	Forced Air, Natural Gas
Cooling	Central Air
Fireplace	Yes
# of Fireplaces	1
Fireplaces	Family Room, Gas
Has Basement	Yes
Basement	Finished, Full

### Exterior

Exterior Features	None
Lot Description	Back Yard, Cul-De-Sac, Front Yard, Landscaped, Lawn, Irregular Lot, Underground Sprinklers
Roof	Asphalt Shingle
Construction	Stone, Vinyl Siding, Wood Frame
Foundation	Wood

### Additional Information

Date Listed	April 16th, 2025
Days on Market	6
Zoning	R1

### **Listing Details**

Listing Office	RE/MAX OF LLOYDMINSTER
----------------	------------------------

Data is supplied by Pillar 9â„¢ MLS® System. Pillar 9â„¢ is the owner of the copyright in its MLS® System. Data is deemed reliable but is not guaranteed accurate by Pillar 9â„¢. The trademarks MLS®, Multiple Listing Service® and the associated logos are owned by The Canadian Real Estate Association (CREA) and identify the quality of services provided by real estate professionals who are members of CREA. Used under license.