

# \$399,900 - 889 Stewart Drive Nw, Medicine Hat

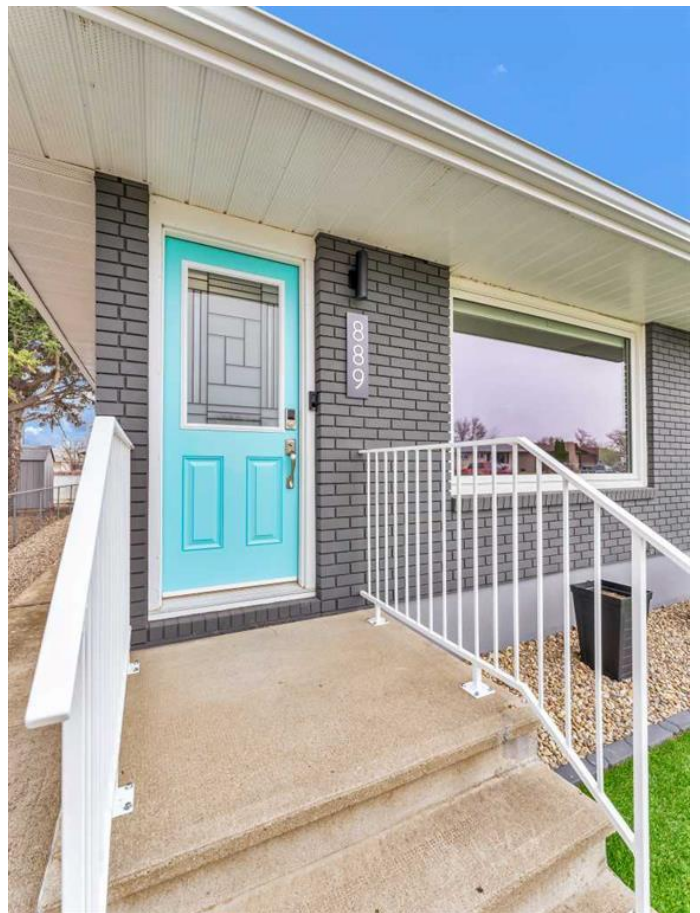
MLS® #A2212131

**\$399,900**

4 Bedroom, 2.00 Bathroom, 1,194 sqft  
Residential on 0.13 Acres

Northeast Crescent Heights, Medicine Hat,  
Alberta

Welcome to 889 Stewart Drive NW a beautifully renovated home offering modern finishes, thoughtful updates, and low-maintenance living, inside and out. From the curb, you'll notice the freshly painted exterior, custom front step railings, and professionally installed artificial turf. A peaceful bubbling fountain, connected to a new underground irrigation system, adds a touch of tranquility, while new landscape rock and a private backyard patio create a polished, functional outdoor space. The backyard also features new sod and automated irrigation. Inside, the main floor has been completely updated. Fresh paint, luxury vinyl plank flooring, new interior and closet doors, and built-in closet organizers add style and convenience. The kitchen features brand-new cabinets, quartz countertops, stainless steel appliances, and updated insulation and drywall. Both bathrooms have been fully renovated, including a deep tub with tiled shower surround, double vanity, new fixtures, and updated lighting throughout the home. The fully finished basement offers even more space with new drywall, insulation, and a large egress window in the bedroom. New mouldings, trim, and doors match the main floor, while LED puck lighting, a suspended ceiling, and waterproof vinyl plank flooring bring comfort and durability. The stairs are freshly carpeted with a new underlay. Every detail in this home has been thoughtfully



upgraded, paired with a functional layout with 3 bedrooms on the main level, 1 below and 2 bathrooms with an opportunity to add a third in the basement, this home is perfect for many buyer types. Location is on a highly desired, quiet street in NWCH within walking distance to scenic path systems, schools, bus routes, and a stone's throw away from shopping amenities and the big mall center. Just move in and enjoy.

Built in 1964

### Essential Information

MLS® #	A2212131
Price	\$399,900
Bedrooms	4
Bathrooms	2.00
Full Baths	1
Half Baths	1
Square Footage	1,194
Acres	0.13
Year Built	1964
Type	Residential
Sub-Type	Detached
Style	Bungalow
Status	Active

### Community Information

Address	889 Stewart Drive Nw
Subdivision	Northeast Crescent Heights
City	Medicine Hat
County	Medicine Hat
Province	Alberta
Postal Code	T1A 7C2

### Amenities

Parking Spaces	1
Parking	Concrete Driveway, Garage Door Opener, Single Garage Detached, Garage Faces Rear, On Street

# of Garages 1

## Interior

Interior Features Closet Organizers, Double Storage, Vinyl Windows

Appliances Dishwasher, Dryer, Electric Washer, Window Coverings

Heating Forced Air

Cooling Central Air

Has Basement Yes

Basement Finished, Full



## Exterior

Exterior Features None

Lot Description Back Yard, Landscaped, Lawn, Level, Low Maintenance Landscape, Underground Sprinklers

Roof Asphalt Shingle

Construction Mixed

Foundation Poured Concrete

## Additional Information

Date Listed April 17th, 2025

Days on Market 6

Zoning R-LD

## Listing Details

Listing Office ROYAL LEPAGE COMMUNITY REALTY

Data is supplied by Pillar 9â,,ç MLSÂ® System. Pillar 9â,,ç is the owner of the copyright in its MLSÂ® System. Data is deemed reliable but is not guaranteed accurate by Pillar 9â,,ç. The trademarks MLSÂ®, Multiple Listing ServiceÂ® and the associated logos are owned by The Canadian Real Estate Association (CREA) and identify the quality of services provided by real estate professionals who are members of CREA. Used under license.